



ecra

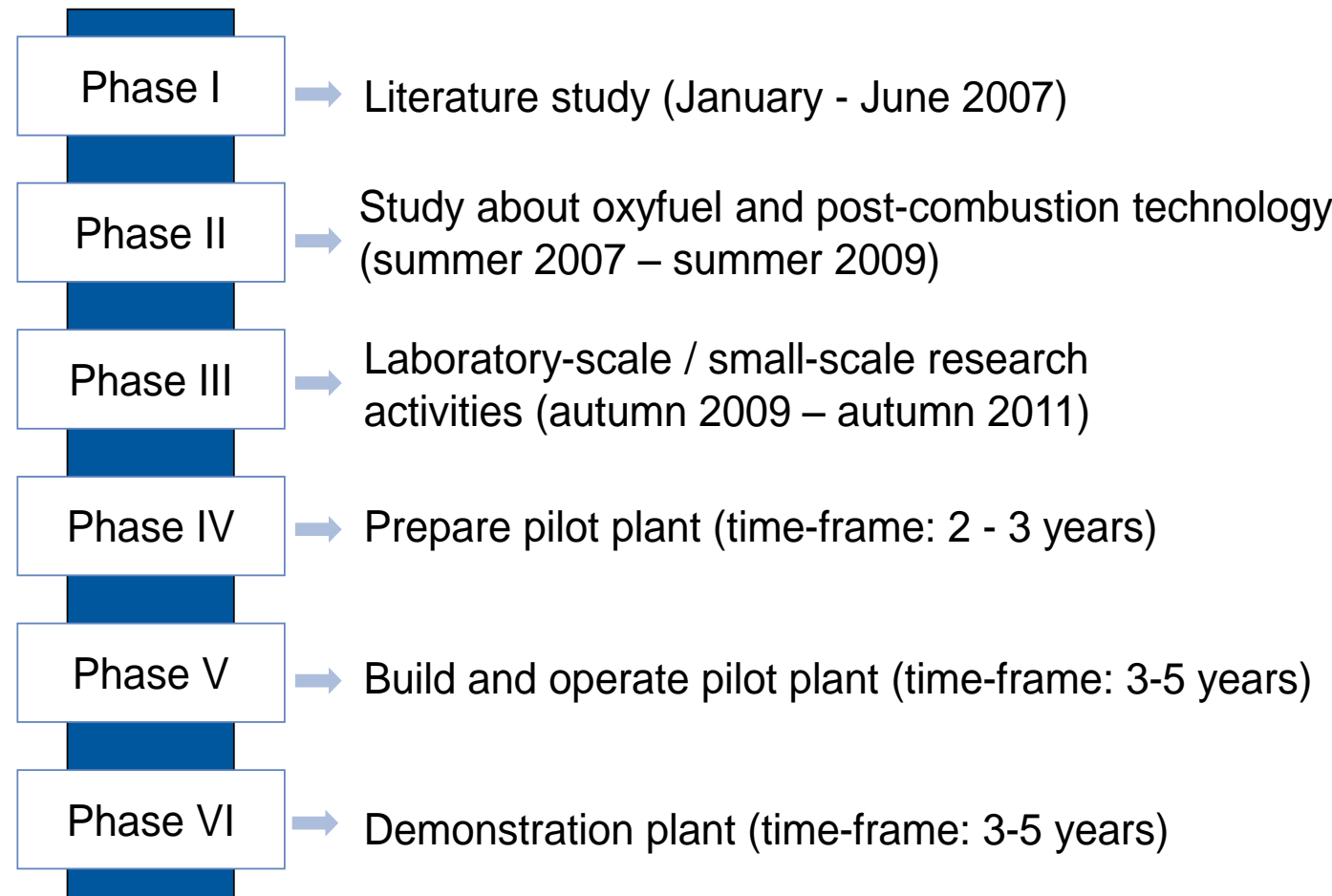
european cement research academy

Contact ECRA:
www.ecra-online.org
Email: info@ecra-online.org
Phone: +49 (0) 211 23 98 380

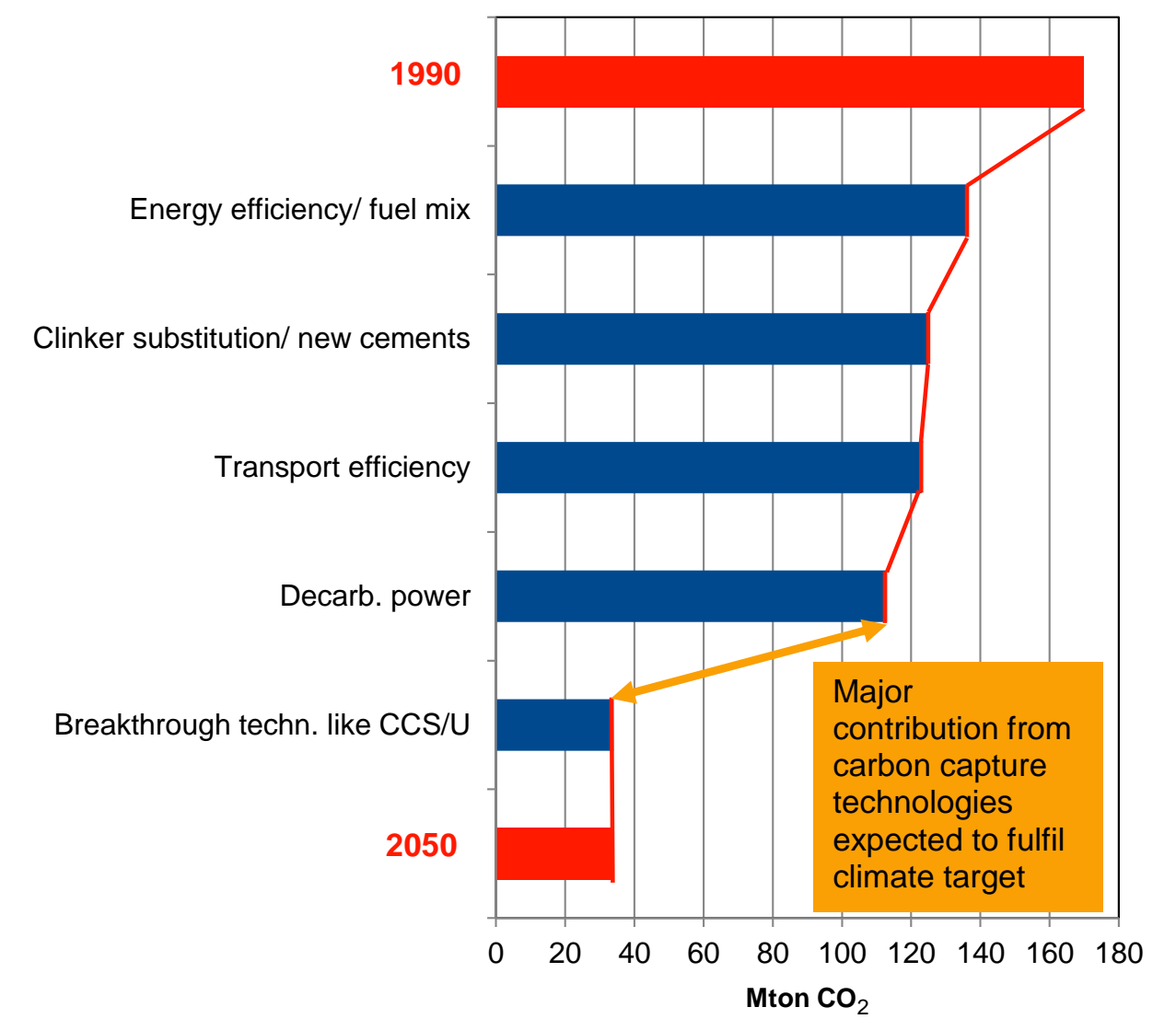
The cement industry's approach to carbon capture

ECRA's approach from basic research towards an industrial implementation of carbon capture

- All low-carbon roadmaps require a significant reduction of CO2, also in the cement sector.
Correspondingly and according to CEMBUREAU approx. 60% of cement plants in the EU should be equipped with CCS technology by 2050.
Based on the need to develop this breakthrough technology, ECRA is investigating its technical and economic feasibility in its CCS research project.
A focus is also being placed on CO2 reuse in cooperation with the University of Mons.
In the current phase IV of the project an oxyfuel pilot plant is being prepared, taking economic and technical issues into account.



Time schedule of ECRA's CCS project, so far fully industry-funded.



Multiple paths to emission reduction

Source: CEMBUREAU: the role of cement in the 2050 low carbon economy

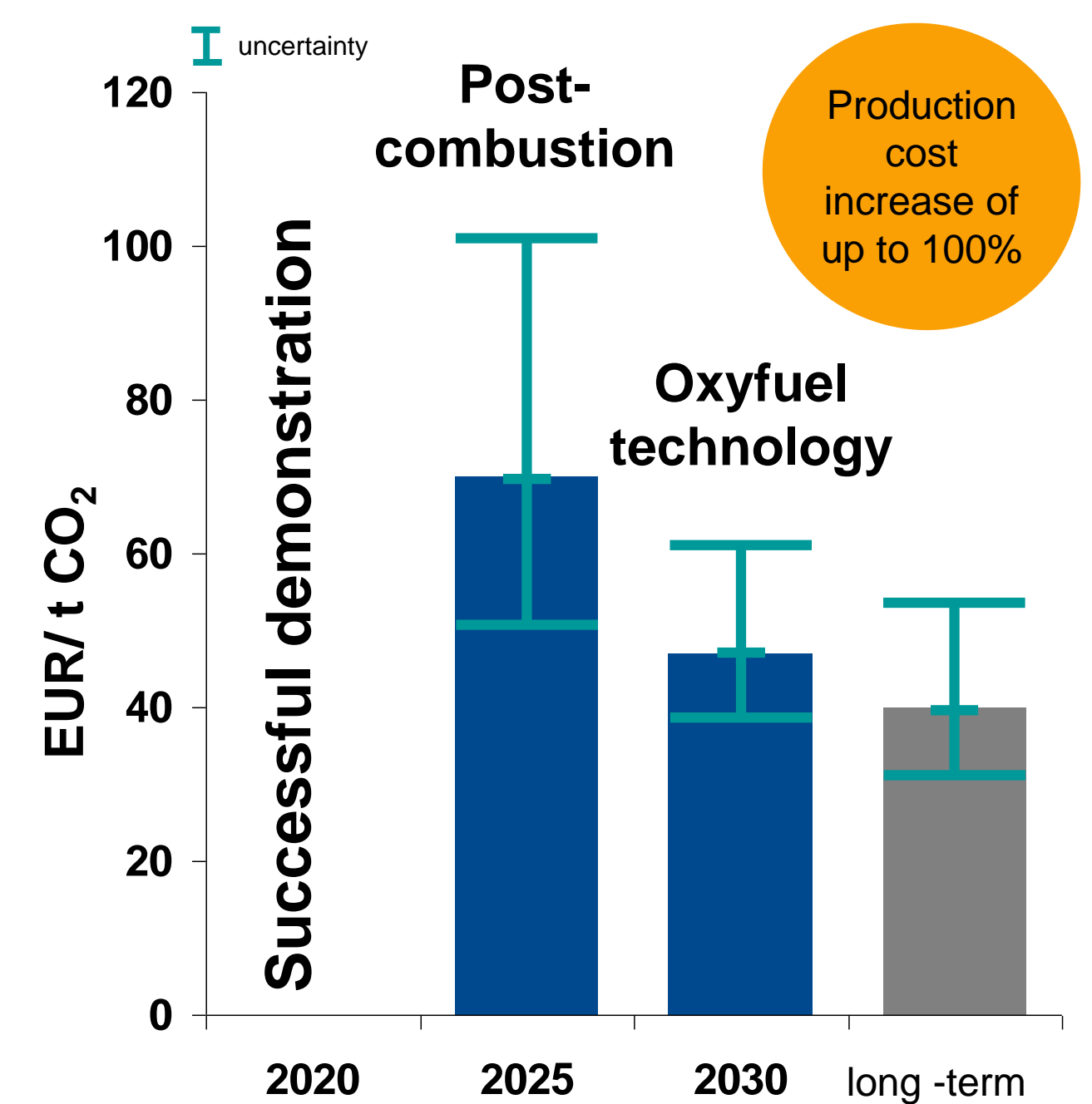
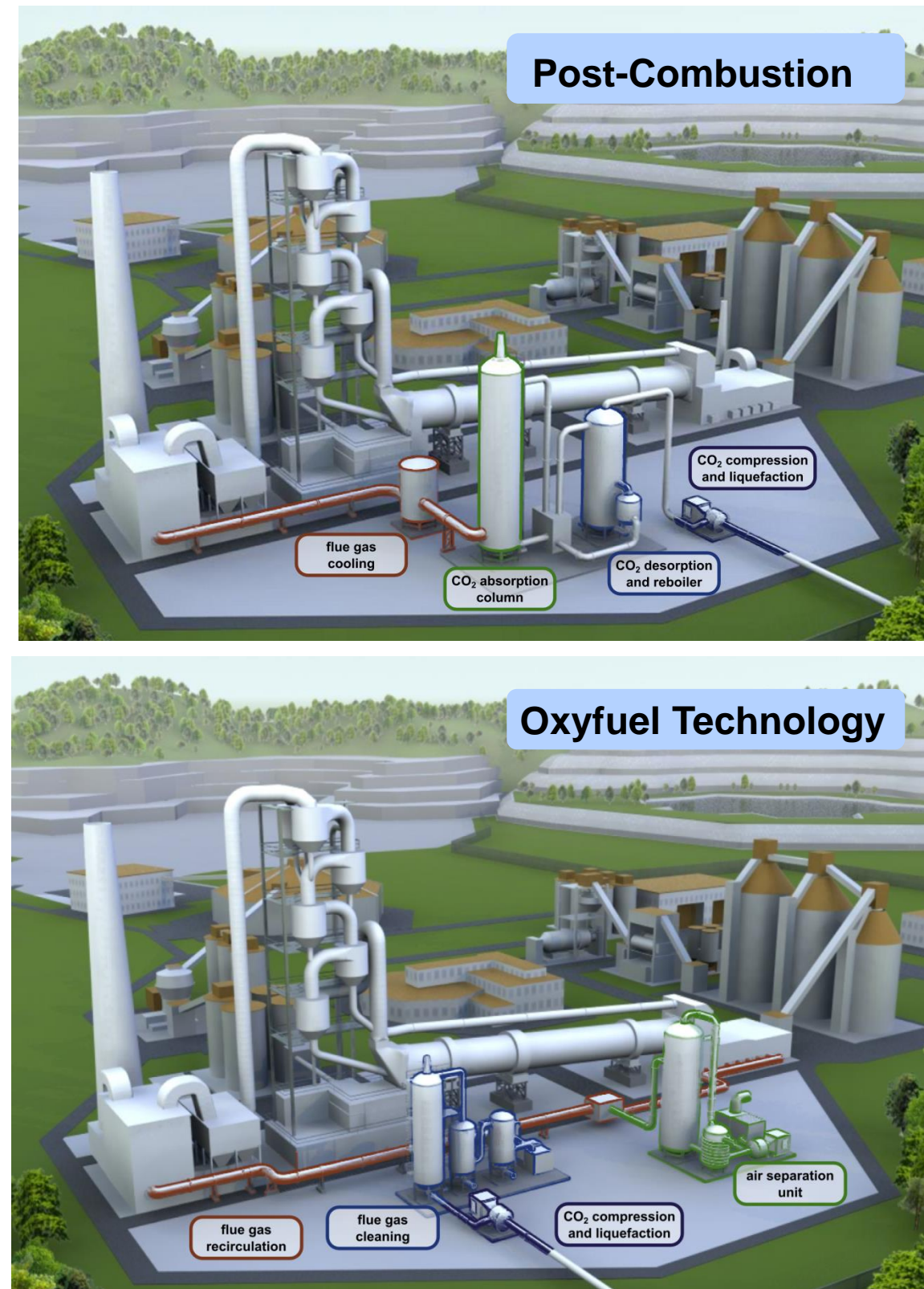
Post-Combustion and Oxyfuel Technology as potential capture solutions for the cement industry

Post-Combustion: Tail-end separation of CO2 from flue gas by e.g. chemical absorption, adsorption, membranes or Calcium Looping.

- A very energy-intensive technology.
Important projects: Norcem's Brevik project (pilot testing), CEMCAP (prototype testing).

Oxyfuel Technology: Combustion with pure oxygen instead of air in combination with flue gas recirculation to increase the CO2 concentration.

- Requires process and design adaptations.
Important projects: ECRA (complete oxyfuel), LafargeHolcim / AirLiquide / FLSmidth (pilot testing of partial oxyfuel), CEMCAP (prototype testing).

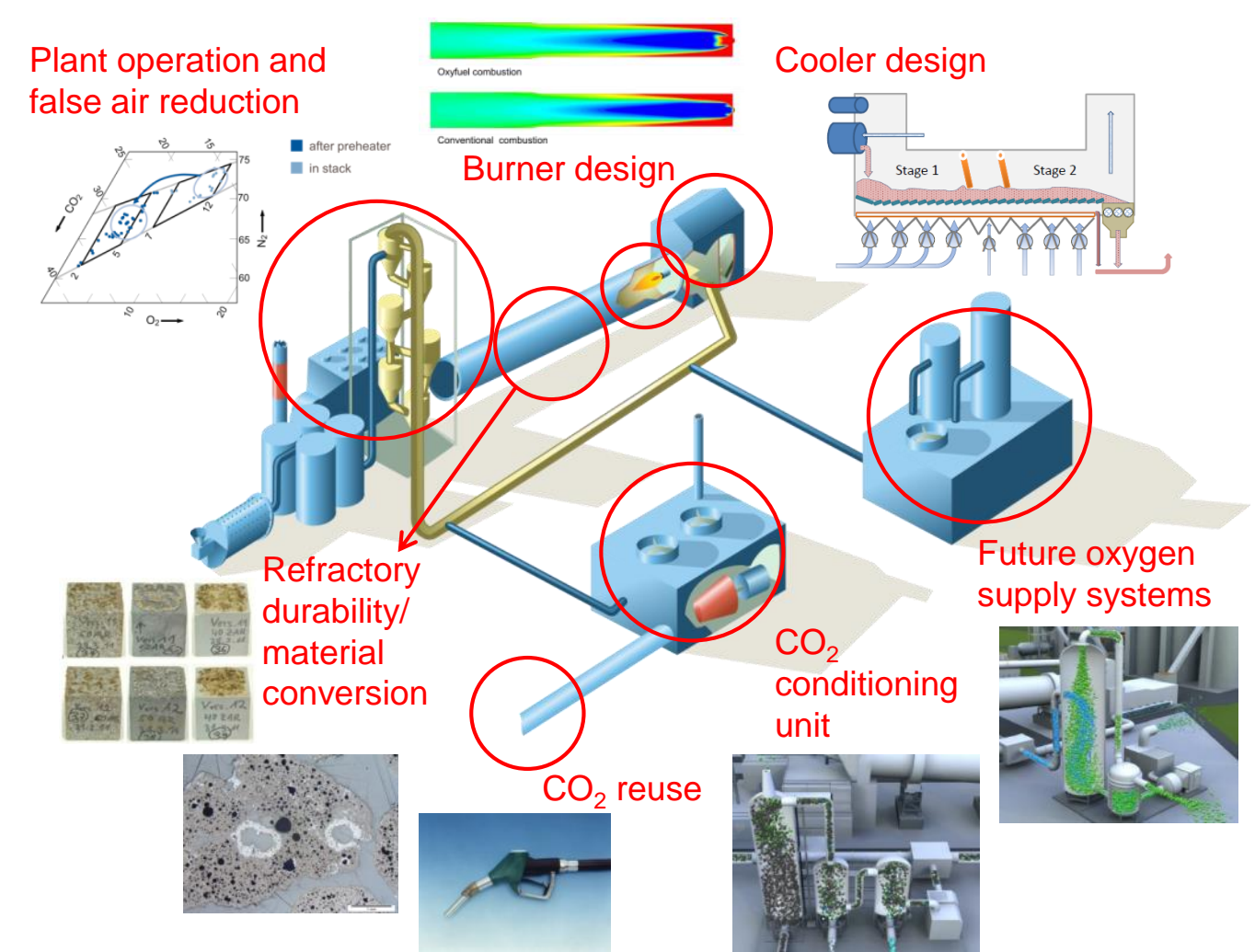
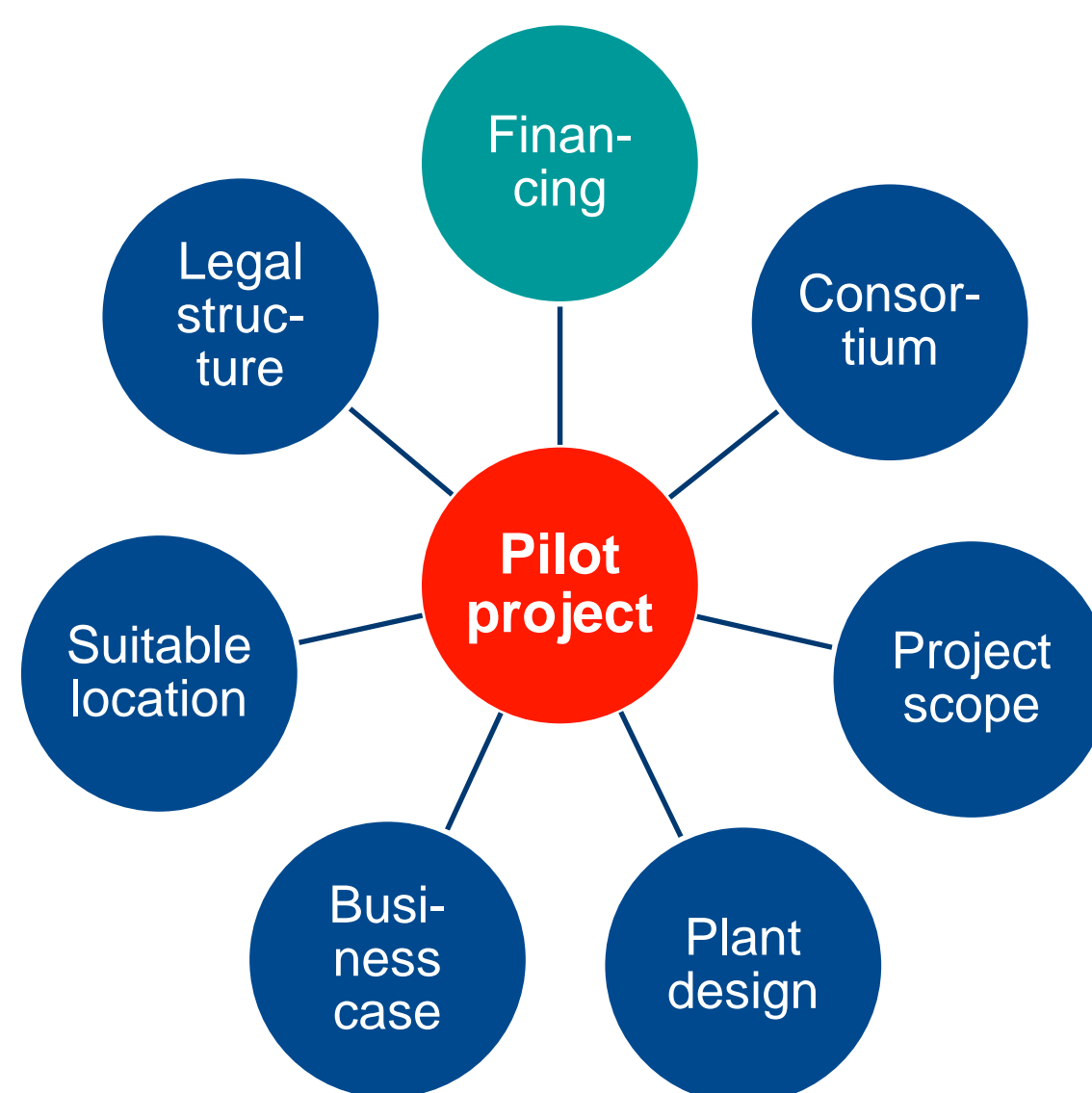


Estimated costs for carbon capture and its corresponding implementation horizon.

Source: ECRA CCS Project: Report on Phase III, 2012

Envisaged next steps towards an industrial-scale oxyfuel cement kiln

- Demonstration of technical and economic feasibility in an industrial surrounding.
Designs: Brownfield (new installation using the infrastructure of existing line) or blackfield (retrofitting existing line).
Size: Industrial-scale > 500 t/d
Two potential locations (blackfield) have been selected.
Projects costs estimated at up to 80 M €.
Project includes engineering/construction, training and operation/scientific evaluation.
Project requires significant funding which might only be available in 2019/20.



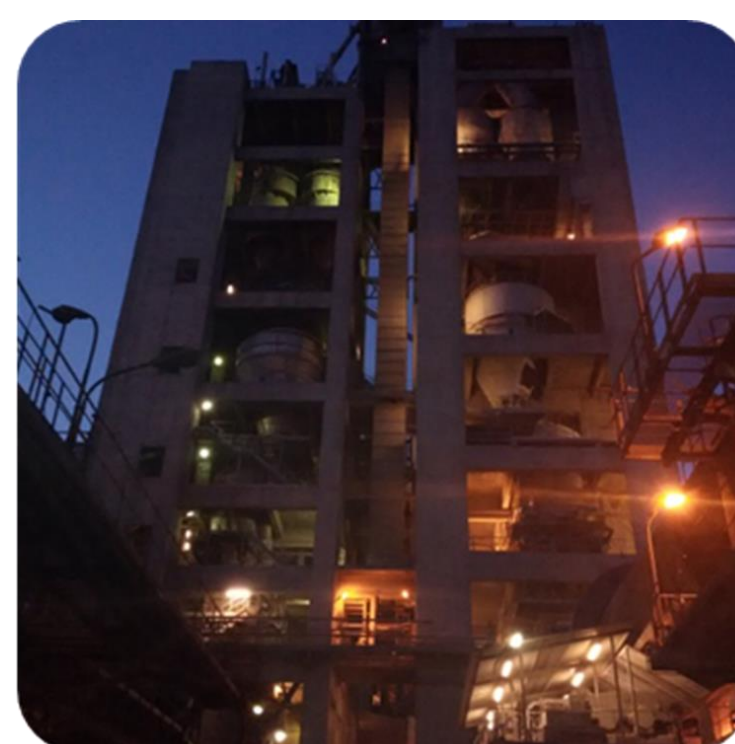
Finalisation of the most important research packages

Source: ECRA CCS Project : Reports on phase III, 2012 and phase IV.A, 2015

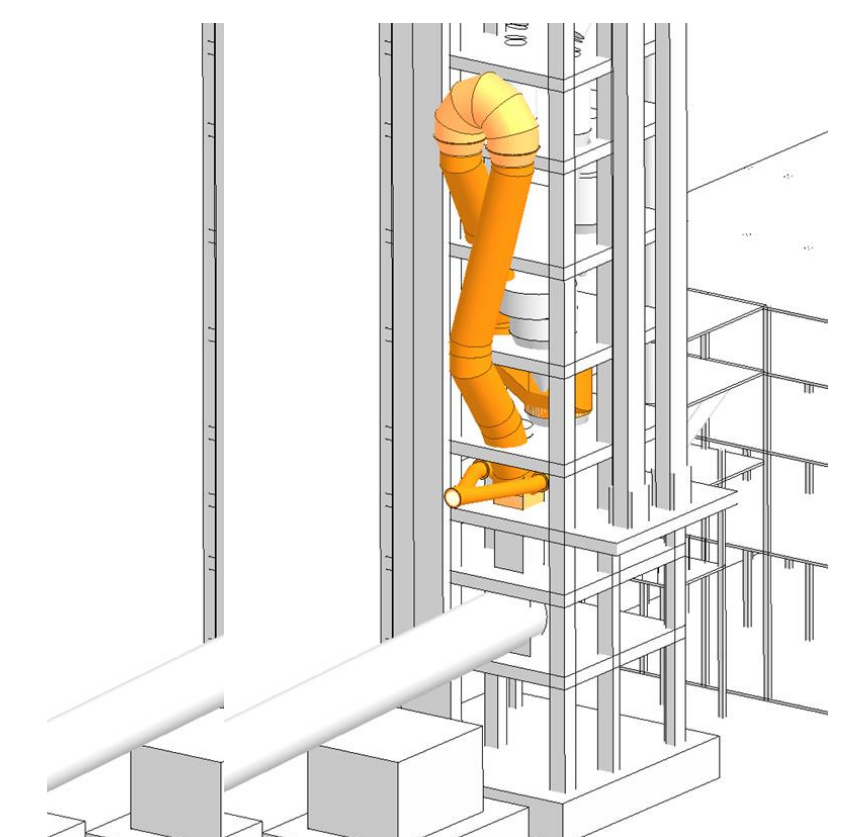
Potential sites for the oxyfuel demo project

Colleferro Plant:

- HeidelbergCement Group (Italcementi Plant)
Plant located in Italy, close to Rome
Kiln not used for daily production
Petcoke as fuel; no alternative fuels
Kiln currently on stand-by
Lowest CAPEX / medium OPEX

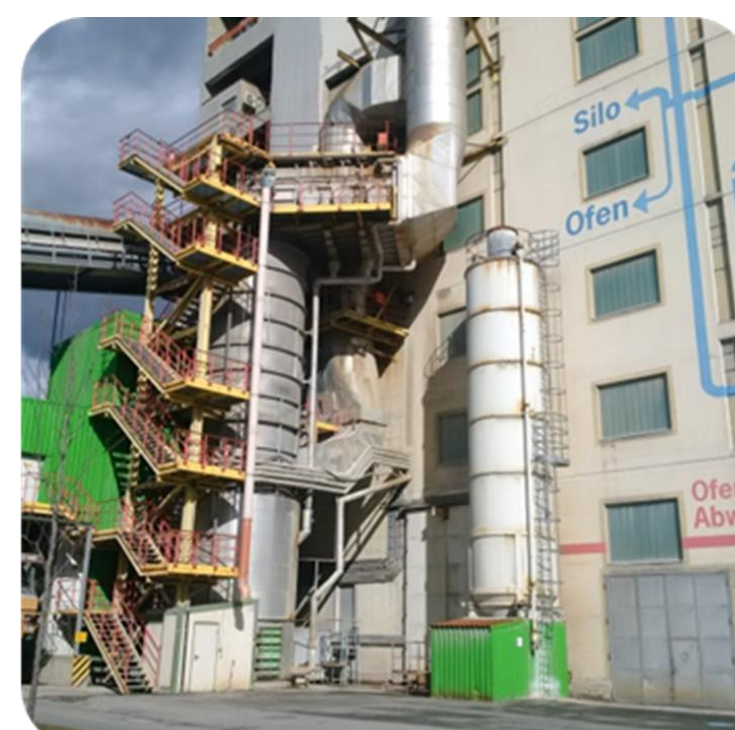


New calciner for the Colleferro Kiln ->



Retznei Plant:

- LafargeHolcim Group
Plant located in the south-east of Austria
100 % alternative fuels goal
Currently operated at maximum production
Low CAPEX / high OPEX



Layout of the modified Retznei Kiln ->

